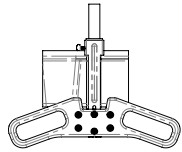
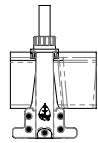


NOTES:  
1. THIS DRAWING SHOWS A REPRESENTATIVE 5' WIDE BY 20' LONG BENCH.

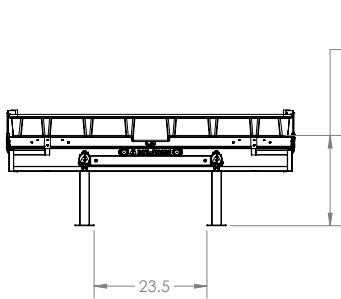
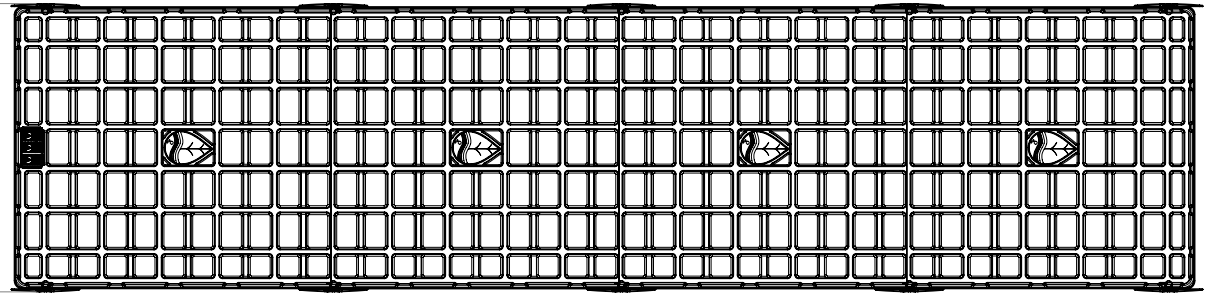


ORIGINAL TRELLIS  
MOUNT  
1" EMT  
3/4" PVC



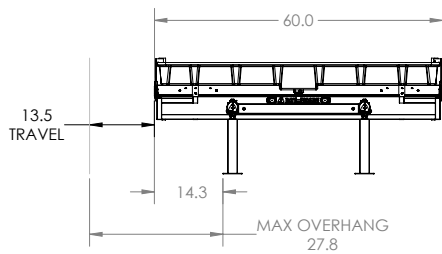
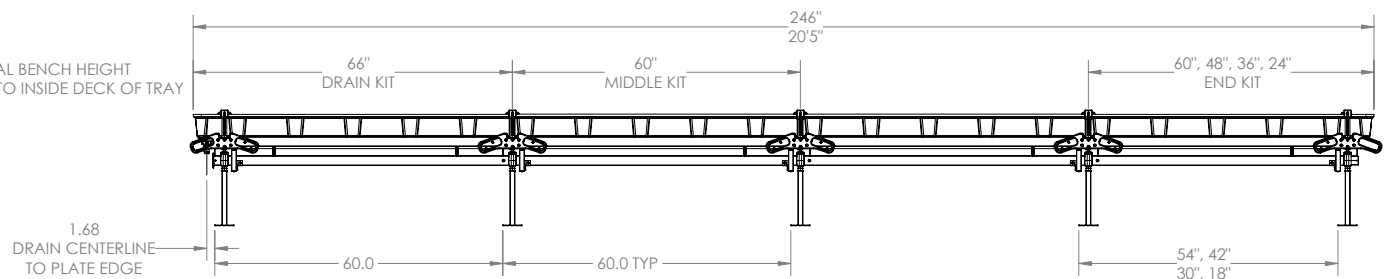
TRILOCK TRELLIS  
MOUNT  
1" EMT  
3/4" PVC  
3/4" EMT

5'  
NOMINAL BENCH WIDTH

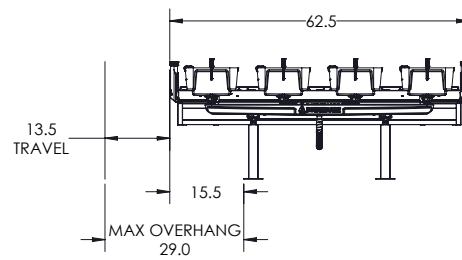


5' EXTRA ROLL BENCH  
LEG SPACING AND HEIGHT

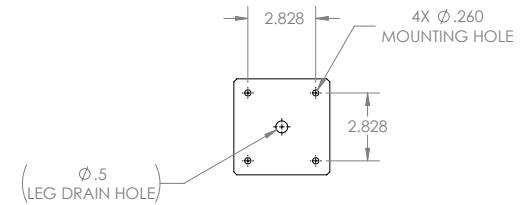
12"  
20"  
30"  
NOMINAL BENCH HEIGHT  
FLOOR TO INSIDE DECK OF TRAY



OG TRAY w/ STANDARD TRELLIS



GUTTER TRAY w/ TRILOCK



LEG MOUNTING PLATE  
DETAILS



This document is not intended to be used for installation purposes.  
We cannot cover all specific applications or anticipate all requirements.  
All specifications are subject to change without notice.  
HawthorneGC.com | Canada: HawthorneGC.ca  
©2024 World Rights Reserved.



Determine layout distances

A. Drain Tray to Wall Spacing

Enter desired spacing here  + 5 1/8" =  Distance A

B. Left Side Tray to Wall Minimum Spacing  
(When bench is slid towards the wall)

Enter desired minimal spacing here  +  =  Distance B  
5' Extra Roll Bench with Standard Trellis, add 27 3/4"  
5' Extra Roll Bench with TriLock™ Trellis, add 29"

C. Bench to Bench Spacing  
(27" aisle minimum)

Enter desired aisle width here  +  =  Distance C  
5' Extra Roll Bench with Standard Trellis, add 33"  
5' Extra Roll Bench with TriLock™ Trellis, add 35 1/2"

D. Distance "L" from Arch 1 leg mounting plate to the last arch mounting plate. Select from  
**Appendix B** based on the nominal bench length.

Distance L

E. Distance A from the back wall; snap a chalk line along the back wall from left to right.

F. Distance B from the left wall; snap a chalk line along the left wall from back to front.

G. Distance C from the line created in step F, snap a parallel chalk line from back to front.  
Repeat as necessary based on the number of benches in the room.

**NOTE: Arches are nominally 60" from arch to arch. The last arch opposite the drain end is a short section. The short section can be 54", 42", 30" or 18" apart depending on the overall length of the bench.**



This document is not intended to be used for installation purposes.  
We cannot cover all specific applications or anticipate all requirements.  
All specifications are subject to change without notice.  
HawthorneGC.com | Canada: HawthorneGC.ca  
©2024 World Rights Reserved.